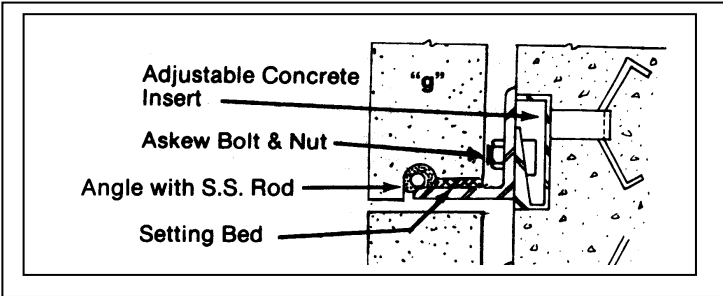
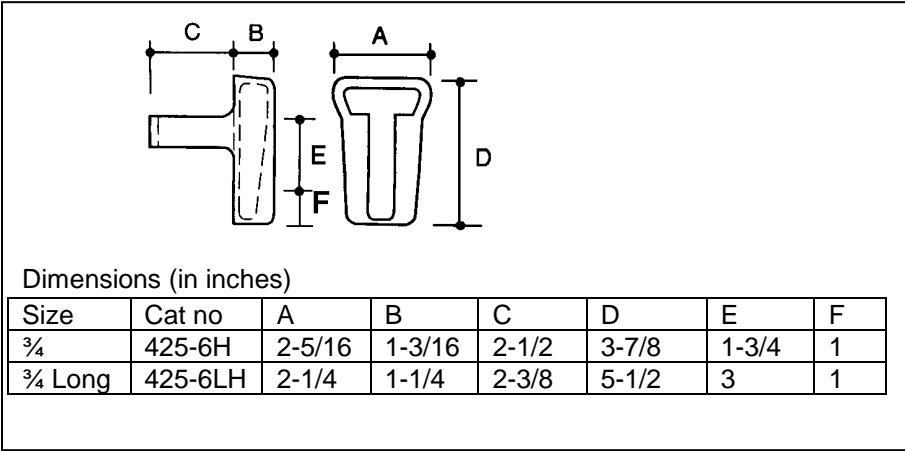
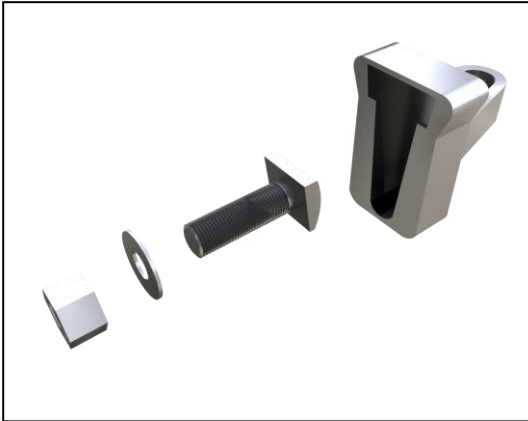


Submittal Sheet
#425 Shelf Angle Wedge Inserts
#427 Askew Head Bolts

Inserts are embedded in concrete slabs to hold Shelf Angles or other devices using #427 Askew Head Bolts. The insert is nailed to the wood form through 3 holes. When the form is stripped, the nails are clipped from the outside allowing the #427 bolt to vertically adjust to the proper location. #442 or #443 shims can be used if necessary. The #425 Shelf Angle must be installed at least 1-1/2" from any edge on the concrete slab.



Standards:

425 insert - Hotdip Galvanized After Fabrication

- 425-6H: 3/4" Regular
- 425-6LH 3/4" Long

427 bolt with nut and washer
3/4" diameter - Hotdip Galvanized After Fabrication

Bolt Lengths: 2" 2 1/2" 3"

Quantity: _____

Material Specifications

Malleable Iron Specifications: ASTM A47-B4 Ferritic Malleable Iron Castings
Class/Grade 32510
Min Tensile Strength - PSI 50,000
Min. Yield Strength - psi 32,500
Elongation in tension 10%
Microstructure is Temper carbon and ferrite
For additional information on Specifications of Shelf Angle Inserts refer to the following:
ASME B18.2.1-2010 - Askew Head Bolts - American National Standards Institute.

Load Values (ultimate loads):
Shear: 15,150 lbs Tension: 12,170 lbs
Concrete Strength: 4,125 psi
Torque 150 ft/lbs
Heckmann advises a safety factor of 3 be applied to the above loads.