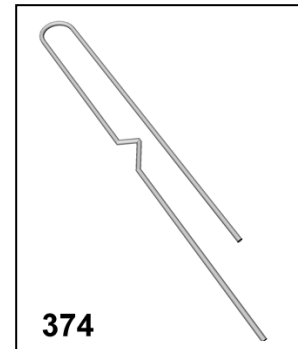
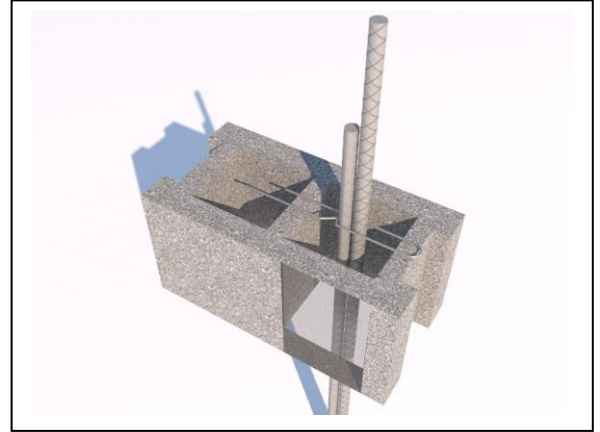


Submittal Sheet
#374 Hairpin Rebar Positioner

The Hairpin Rebar Positioner holds rebar in place while you install the next course of block. Reach down, turn the rebar 90°, and pull the rebar up into place. Turn back 90° to lock the rebar in place.

The Hairpin Rebar Positioner:

- Increases productivity by eliminating overhead lifting of heavy block over rebar.
- Eliminates need to grout block wall cores in sections, and allows for a monolithic pour of grout.
- Minimizes rebar waste by an accurate and secure placement method and provides superior structural strength by precise location of vertical reinforcing steel.
- Allows for full realization of the tensile strength of the rebar, thus meeting specified building codes and designs.



Standards:

- 374-SG – 9 gage (.150") for #3, #4, and #5 bar
- 374-LG – 6 gage (.194") for #5 and #6 bar

Quantity: _____

Material Specifications

Steel: Grade 50 Spring Steel

Plating: Zinc Plating to ASTM B-633 SC1