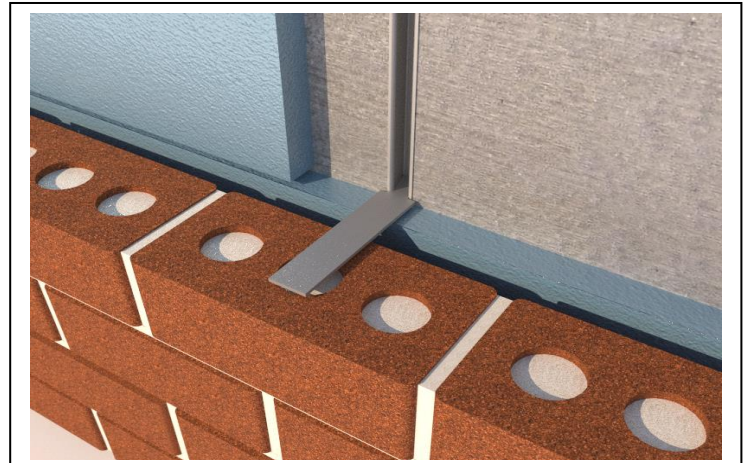
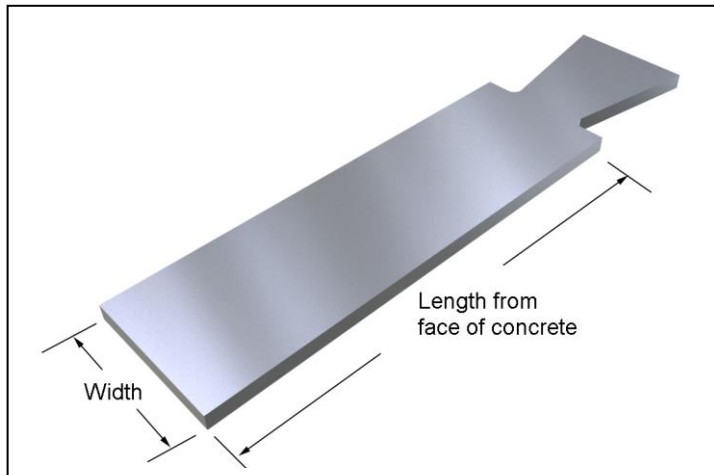


Used for field bending or drilling to hold Stone to a concrete backup wall with standard #100 Dovetail slots. Use when kerf distance from backup wall is unknown until installation.

See #115 Dovetail Stone Anchor for factory bent stone anchors.



Made to Order

Thickness: 3/16" 1/8" 12 gage

Length from face of concrete: _____

Width 1" minimum): _____

Finish: Stainless type 304 Hot Dip Galvanized
 Mill Galvanized Zinc Alloy 710

Quantity: _____

Material Specifications

Stainless Steel: Sheet metal anchors and ties:
ASTM A 167, ASTM A 666, ASTM A
240/A240M AISI Type 304.

(AISI Type 316 available upon request)

Hotdip Galvanized: ASTM A 153 Class B-2:
(1.50 oz/ ft²).(0.46kg/m²)

Mill Galvanized: Sheet metal anchors and
ties: ASTM A 653 G60

Plain Carbon Steel: ASTM A1008/A1008M
Structural Steel ASTM A36/A36M-08

Firewall Anchors: Rolled Strip Zinc Alloy 710.
(Firewall alloy 1/8" and 16 gage only)