



Heckmann Building Products Inc.

1501 N. 31st Avenue

Melrose Park, IL 60160-2911

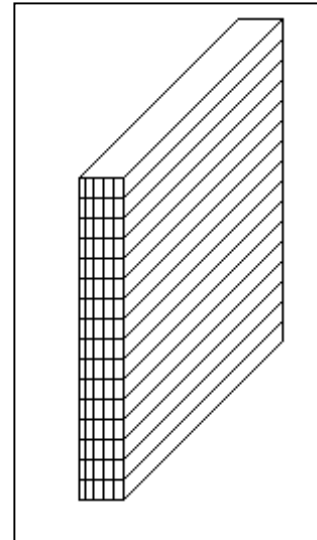
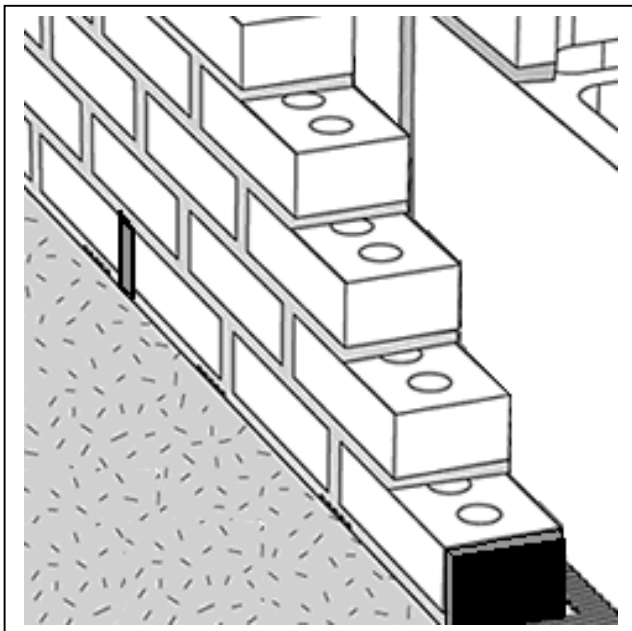
800-621-4140 or 708-865-2403 Fax: 708-865-2640

www.heckmannbuildingprods.com

SUBMITTAL SHEET: NO. 85 CELL VENT

Cell vents are installed in the bottom vertical mortar joint of a brick veneer wall. It consists of many small adjacent passageways, which allows moisture to vent from the cavity to the exterior of the building while restricting ingress of insects. The cellular composition provides easy drainage for moisture along the full height of the head joint. Manufactured from polypropylene.

Catalog Number	Size
85-JB	Jumbo 3/8 x 3-3/8 x 3-3/8 Brown
85-JC	Jumbo 3/8 x 3-3/8 x 3-3/8 Clear
85-JG	Jumbo 3/8 x 3-3/8 x 3-3/8 Gray
85-RB	Regular 3/8 x 2-1/2 x 3-3/8 Brown
85-RC	Regular 3/8 x 2-1/2 x 3-3/8 Clear
85-RG	Regular 3/8 x 2-1/2 x 3-3/8 Gray



Approvals:

Comments: