



# Heckmann Building Products Inc.

1501 N. 31<sup>st</sup> Avenue

Melrose Park, IL 60160-2911

800-621-4140 or 708-865-2403 Fax: 708-865-2640

www.heckmannbuildingprods.com

## SUBMITTAL SHEET: #84 WEEP-THRU MORTAR DEFLECTOR

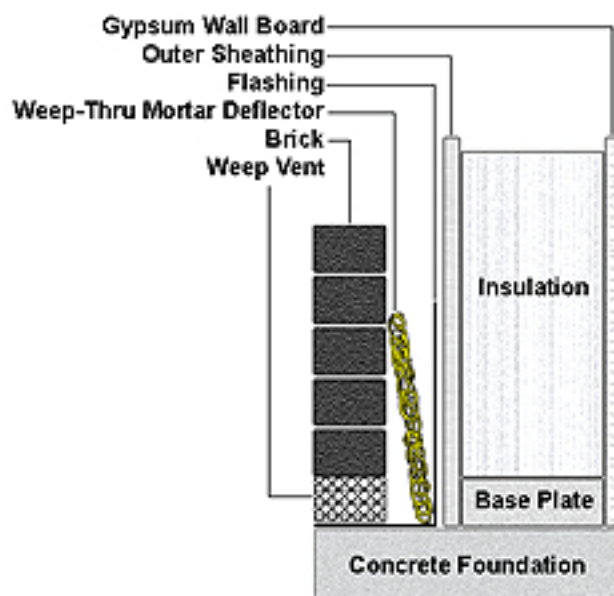
The Weep-Thru Mortar Deflector is designed to catch mortar droppings and allow masonry cavity drainage through the weep holes. It has a three dimensional geometric patterned core and is designed to be 10 inches (25.4 cm) high in the cavity wall.

- Allows cavity drainage and protects flashing.
- When properly installed, will prevent clogging of weep holes.
- Will not grow mold.
- Polymer core is resistant to most known corrosive chemicals, including solvents.
- 10 inch width suspends mortar droppings above the weep holes, but below the flashing connection to the interior wall.
- Easy installation. No mechanical fasteners required.

Available in 2 sizes

**Catalog # 84-1** For 1" wide cavity walls – 50 feet per roll

**Catalog # 84-2** For 2" wide cavity walls – 25 feet per roll



### Stainless Steel:

Sheet metal anchors and ties: ASTM A 167 AISI Type 304.

Plate and bent bar anchors: ASTM A 666 AISI Type 304.

Wire ties and anchors: ASTM A 580 AISI Type 304.

### Hotdip Galvanized:

ASTM A 153 Class B-2: (1.50 oz/ft<sup>2</sup>)(0.46kg/m<sup>2</sup>)

### Mill Galvanized:

Sheet metal anchors and ties: ASTM A 653 G60

Wire: ASTM A 641 (0.1 oz/ft<sup>2</sup>)

### Plain Steel:

Sheet Metal anchors and ties: ASTM A 569, ASTM A 366.

Plates, bars, and shapes: ASTM A 123, ASTM A 36.

Wire: ASTM A 82, ASTM A 82-95a.

Approvals:

Comments: