

No. 374 Steel-Wich™ Rebar Positioner

The "Original Telescoping Rebar Positioner"™

Patent No. 6,141,937

04080 Masonry Anchorage & Reinforcement



Steel-Wich™

The "Original Telescoping Rebar Positioner"™

National Distributor:

Heckmann Building Products Inc.

1501 N. 31st Avenue

Melrose Park, IL 60160-2911

800-621-4140 708-865-2403

Fax: 708-865-2640

www.heckmannbuildingprods.com

Email: Heckmann@worldnet.att.net

BASIC USE

The Steel-Wich™ CMU "Original Telescoping Rebar Positioner"™ (TRP) device is simple and effective in positioning reinforcing steel rods (rebars) in hollow masonry structures. The TRP is appropriate for use in reinforced masonry walls in all types of buildings. The efficiency of the device allows quick and accurate positioning of rebars, usually a difficult task using conventional means. Precise positioning leads to better control of strength approaching the desired capacities according to design. The Steel-Wich™ leads to better quality control and safety for masonry wall construction.

Steel-Wich™ offers precise telescoping positioning, and allows flexibility in changing the position to suit special needs, such as positioning dowels with connections to bond beams, or with other steel construction which requires some precision. The "telescopic" placement of bars using this mechanical device eliminates the need for welding of bars. This reduces the danger of thermal modification of bar strength, thus eliminating reduction of wall strength under lateral loading.

ADVANTAGES

- * Increases mason's productivity, reducing labor costs.
- * Eliminates overhead lifting of heavy block over rebar.

* Allows installation of reinforcing steel with limited overhead clearance.

* Minimizes rebar waste by accurate and secure placement method.

* Provides superior structural strength in masonry wall construction by precise location of vertical reinforcing steel.

* Full realization of tensile strength of rebar, thus meeting specified building codes and designs.

* Eliminates need to grout block wall cores in sections, and allows for a monolithic pour of grout.

* Preserves block integrity, with no waste of grout, and controls flow of grout, providing containment within vertical cores.

* Allows selective vertical and horizontal positioning of rebar, ensuring natural and mechanical bonds with grout.

* Allows vertical rebar to cross horizontal bond beam rebar at the top of masonry walls.

* No mechanical systems interference with reinforcing steel.

* Eliminates welding of rebar at overlap.

* Rebar reinforcement can be customized for individual projects.

COMPOSITION & MATERIALS

Steel-Wich™ CMU Telescoping Rebar Positioners are fabricated from bent carbon steel wire.

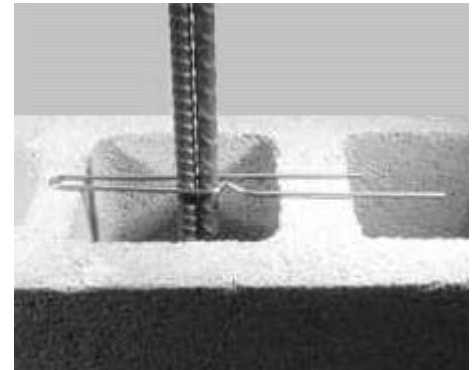
* For 3/8" (9.5 mm), 1/2" (13 mm), and 5/8" (16 mm) reinforcement rods: Available in Plain Steel (Cat. No. 374-SP) or Electro-Plated Steel (Cat. No. 374-SG).

* For 5/8" (16 mm), 3/4" (19 mm), 7/8" (22 mm), and 1" (25 mm) reinforcement rods: Available in Plain Steel (Cat. No. 374-LP) or Electro-Plated Steel (Cat. No. 374-LG).

INSTALLATION

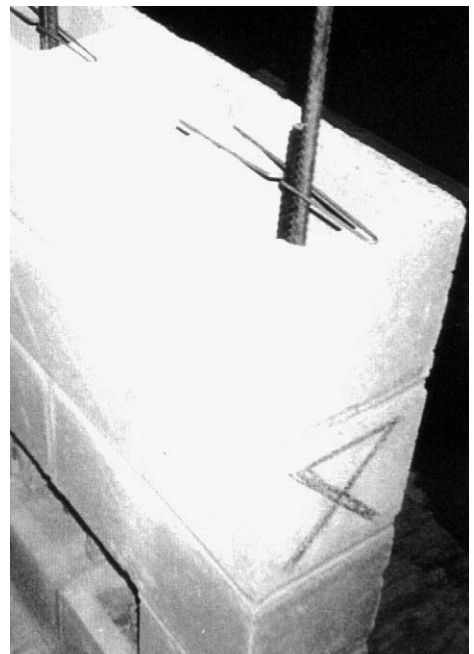
Preparatory Work

Erect load bearing masonry wall on



foundation with dowels in place. Continue to lay concrete blocks up to eighth course, 5' 4" (1.626 m) in height, without installing any additional vertical reinforcing. When finished installing eighth course, drop two 6' (1.829 m) steel rebar dowels in each block core requiring reinforcement.

Installing The Telescoping Rebar Positioner (TRP): Hold rebar vertically; grasp long end of TRP; guide open end of TRP horizontally across vertical rebar; pull TRP so rebars slide past centering knob of device. At this point, rebars are securely fastened to TRP. Next, rotate rebars so raised vertical



ridges on each side of rebar are in contact with TRP, allowing TRP to slide freely against rebars. Center and position rebars in block core, grasping each end of TRP; slide TRP down vertically onto top of concrete block, ensuring each end of TRP is straddling end or center block webs, and that device is resting flush on webs.

To secure rebar in position, rotate rebar 1/4 turn. Diagonal ribs of rebar against TRP will lock it into position. Apply a full mortar bed joint, and lay next block course. TRP is now embedded between the block coursing, and the installation is complete.

Lay an additional one or two courses of block. For full unlimited vertical movement of positioned steel rebar, use the Telescoping Rod Action feature of TRP. Reach down into block core and grasp Telescoping Rebar (rebar farthest from centering knob). Rotate rebar 1/4 turn to disengage locking feature. Pull up rebar vertically to desired height and rotate another 1/4 turn to re-engage locking feature. Continue this procedure

until rebar is fully extended another eight courses. Repeat to install additional Telescoping Rebar Positioners (TRP) as required.

(Complete illustrated installation recommendations are available from manufacturer.)

MAINTENANCE

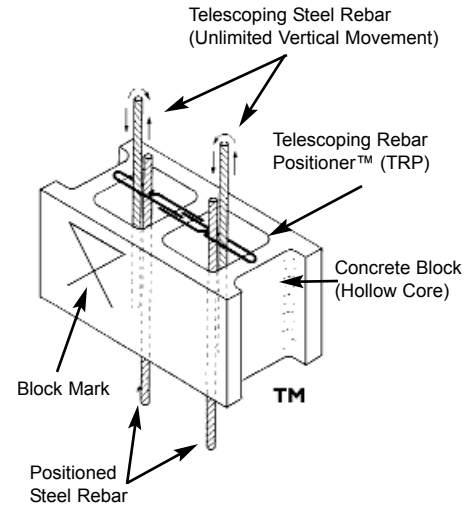
Once Installed the Steel-Wich Rebar Positioner requires no maintenance.

AVAILABILITY

Products are available nationwide through Heckmann Building Products Inc. Call 800-621-4140 or 773-826-8564 for current pricing.

WARRANTY

Steel-Wich Inc. , warrants its manufactured products to be free from defects in material and manufacturing. The sole remedy of purchaser under this warranty is that Steel-Wich, Inc. or its distributors will replace any of its products it finds to be defective. No warranties of fitness and no warranties of merchantability for a particular use or



purpose is hereby made. This warranty is expressly in lieu of any other warranties implied or expressed. Steel-Wich, Inc. or its distributors will not be responsible for any consequential or incidental loss however caused.

TECHNICAL SERVICES

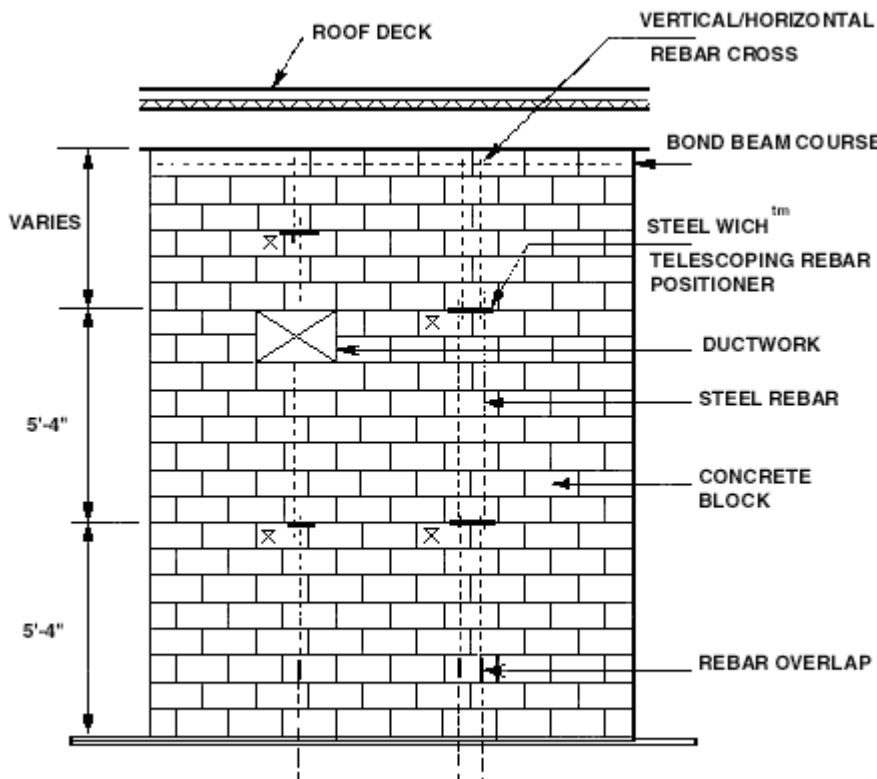
Contact Heckmann Building Products Inc. for any technical assistance.

FILING SYSTEMS

* Sweets General Building and Renovation Catalog Files, Heckmann Building Products Inc. Section 04082/Hec.

* www.heckmannbuildingprods.com

"Steel-Wich" and "Original Telescoping Rebar Positioner" are registered trademarks of Steel-Wich, Inc.



Distributed By: